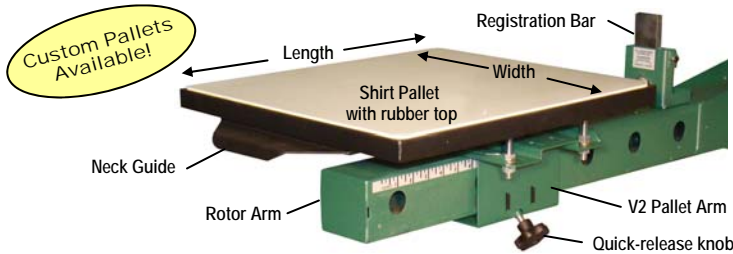


V-2000HD PALLETS & ACCESSORIES

Vastex, quality made in the U.S.A. since 1960



- Never warp, high strength steel construction
 - Quick release and side ruler for easy locating
 - Heat & solvent resistant rubber top (replaceable)
 - Neck guide to aid in garment positioning
 - 4-bolt adjustable, pallet arm (included w/ pallet)
 - Elevated pallet for easy loading
- 25 Year Non-warping Pallet Warranty

Shirt Pallets

- 13" x 11.5" (33 x 29 cm)*
- 14" x 14" (36 x 36 cm)*
- 15" x 17" (38 x 43 cm) Standard*
- 10.5" x 17" (27 x 43 cm) Junior*
- 17" x 21" (43 x 53 cm) Oversized*
- 20" x 24" (51 x 61 cm) Jumbo
- Many other stock sizes available.

Custom pallets available!

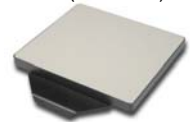


Pallet Arm (V2-ARM) Make your own pallet



Mini Pallets

- 6" x 6" (15 x 15 cm)*
- 9" x 8" (23 x 20 cm)*



Long Sleeve Pallets

- 4" x 19" (10 x 48 cm)*
- 6" x 19" (15 x 48 cm)*
- (May require min. 27.5" long screen.)



Double Long Sleeve Pallet

- (2) 4" x 19" (10 x 48 cm)
- (May require min. 27.5" long screen.)



Short Leg & Sleeve Pallet

- 3, 4, 5, and 6" x 9" (8, 10, 13, and 15 x 23 cm)*



Single Leg Pallet

- 6" x 24" (15 x 66 cm)
- requires 31" long screen



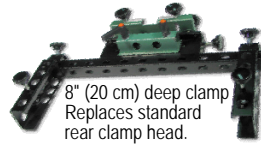
Clamp on Pallet Adapters

- 6.5" x 5" (17 x 13 cm) Polo Attachment*
- 3.875" x 4" (9.8 x 10 cm) Pocket Attachment*
- 3" x 5" (8 x 13 cm) Above Pocket Attachment*



Side Clamp Heads

- 2 widths: 22" or 26" (56 or 66 cm) max. wide screen,
- 2 depths: 8" or 30" (20 or 76 cm) deep clamps



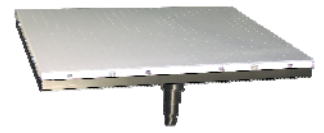
8" (20 cm) deep clamp
Replaces standard rear clamp head.

30" (76 cm) deep clamp

Great for printing player names.

Vacuum Pallet

- 18" x 24" (46 x 61 cm)
- Plug in your own shop vacuum.



Hat Pallets (3 to choose from)

- VP-H1** 5.125" x 3" (13 x 8 cm)*
- VP-H2** 4.875" x 3" (12 x 8 cm)*
- VP-H3** 3.563" x 2.5" (9 x 6 cm)*



Hat Printing Attachment*

Attachment contains:

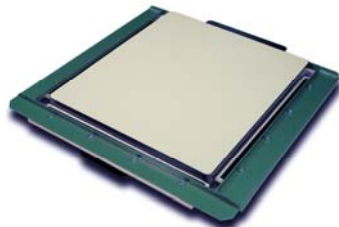
- (1) Hat pallet (3 sizes to choose from)
- (1) Screen arm extension
- (1) 3.5" (9 cm) squeegee
- (1) Hat screen [9" x 12" (23 x 30 cm) w/ 110 mesh]
- (1) Hat pallet arm attachment w/ spring loaded hold down



Jacket Hold Downs

The Quick Stretch is for printing lined garments like jackets, or delicate fabrics where spray adhesive can't be used. Fits around existing pallet.

Available for Many Pallet Sizes, PLUS Sleeve & Custom Sizes



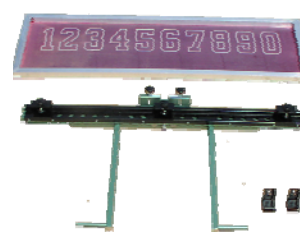
Squeegee Rest



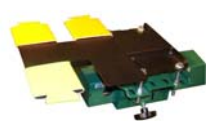
Zipper Attachment 11 X 7.5" & 16 x 7.5"



Numbering Attachment



Koozie Pallet



Umbrella Pallet

- 7.25" x 16.375" x 11" (18.4 x 41.6 x 27.9 cm)*



Shown with Quick Stretch around pallet

All Over Pallet, up to XL shirts (V2P-AOP-XL)



INCLUDES
FOAM TOP

*V-1000 press versions available.

Vastex International Inc.

610.434.6004 | Toll Free 800.482.7839 | Fax 610.434.6607 | www.vastex.com

