

# ENTRY LEVEL MANUAL SCREEN PRINTERS

# V-1000



## Micro-registration

The V-1000 upgradeable manual screen press is designed and priced to meet the needs of the entry level screen printer.

The V-1000 press uses the industry's most unique floating head design which minimizes cost. Accurate registration is achieved without the higher price associated with machines of this capacity.

The V-1000 **tabletop** press **starts at \$615.00\*** and is available from 1 table, 1 color up to 1 table, 4 color. The **rotary floor** press **starts at \$910.00\*** and is available from 1 table, 1 color up to 4 table, 6 color.

The tabletop unit can be mounted to a utility cart. Vastex also makes the V-2000 heavy duty press.

**\$2,307\***

V1-46  
4 table, 6 color shown  
Standard size 15" x 17"  
(38 x 43 cm) steel pallets

## V-1000 Press

- |              |  |
|--------------|--|
| VALUE        | Quality at an entry level price                                  |
| LONG LASTING | Steel Pallets w/ rubber tops - interchangeable with the V-2000** |
| ACCURATE     | Micro-registration   |
| PRECISE      | Holds accurate multicolor printing registration                  |
| INNOVATIVE   | Floating Head, 3 point bearing lock allows multiple heads down   |
| ADJUSTABLE   | 6 way head leveling adjustment                                   |
| VERSATILE    | Available up to 4 table, 6 color (4x6)                           |
| CAPACITY     | Holds up to 21" x 28" (51 x 61 cm) screens                       |
| GUARANTEED   | 1 year warranty on manufacturer's defects                        |
| SHIPS UPS    | Can even ship UPS in multiple boxes                              |
| EXPANDABLE   | From 1 table, 1 color (1x1) to 4 table, 6 color (4x6)            |

**\$1,514\***  
(with cart)



\$1,065\*  
(V1-T14 without utility cart)

V1-T14  
1 table, 4 color  
Standard size  
15" x 17"  
(38 x 43 cm)  
steel pallets  
shown mounted on  
optional utility cart

### Options

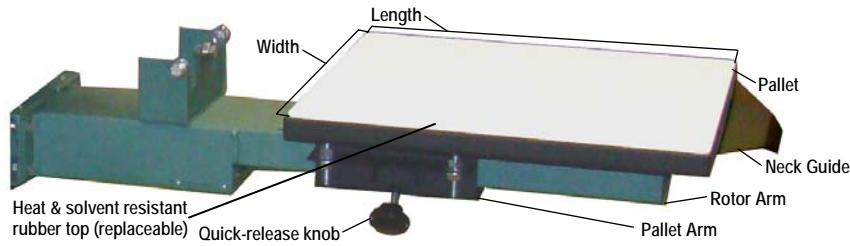
- Utility cart for storage and mobility
- VRS Pin Registration
- Service pan and wheels
- Youth, oversized\*\*, sleeve, hat, pocket, and polo shirt pallets

Utility Cart (UC-1000) ships UPS with:  
4 locking casters,  
10 screen shelves (for 5 screens) &  
1 flat shelf (sits on 1 screen shelf).

\*Starting List Price (USD). 6% sales tax will be added for PA billing addresses. Prices subject to change without notice.  
\*\*The largest pallet available is the oversized 17" x 21" (43 x 53 cm).

# Vastex, quality made in the U.S.A. since 1960

## V-1000 Pallets and Accessories



Never warp, high strength steel construction  
 Heat & solvent resistant rubber top (replaceable)  
 Neck guide to aid in garment positioning  
 4-bolt adjustable, pallet arm (included w/ pallet)  
 Elevated pallet for easy loading  
 25 Year Non-warping Pallet Warranty

### Shirt Pallets

- 13" x 11.5" (33 x 29 cm)
- 14" x 14" (36 x 36 cm)
- 15" x 17" (38 x 43 cm) Standard
- 10.5" x 17" (27 x 43 cm) Junior
- 17" x 21" (43 x 53 cm) Oversized



### Single Long Sleeve Pallets

- 4" x 19" (10 x 48 cm)
- 6" x 19" (15 x 48 cm)



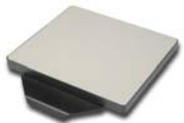
### Short Sleeve Pallets

- 3" x 9" (8 x 23 cm)
- 4" x 9" (10 x 23 cm)
- 5" x 9" (13 x 23 cm)



### Mini Pallets

- 6" x 6" (15 x 15 cm)
- 9" x 8" (23 x 20 cm)



### Short Leg Pallet

- 6" x 9" (15 x 23 cm)



### Clamp on Pallet Adapters

- 6.5" x 5" (17 x 13 cm) Polo Attachment
- 3.875" x 4" (9.8 x 10 cm) Pocket Attachment
- 3" x 5" (8 x 13 cm) Above Pocket Attachment



### Umbrella Pallet

- 7.25" x 16.375" x 11" (18.4 x 41.6 x 27.9 cm)



### Hat Pallets

#### VP-H1

- 5.125" x 3" (13 x 8 cm)



#### VP-H2

- 4.875" x 3" (12 x 8 cm)



#### VP-H3

- 3.563" x 2.5" (9 x 6 cm)



### Hat Printing Attachment

Attachment contains:

- (1) Hat pallet (3 sizes to choose from)
- (1) Screen arm extension
- (1) 3.5" (9 cm) squeegee
- (1) Hat screen [9" x 12" (23 x 30 cm) w/ 110 mesh]
- (1) Hat pallet arm attachment w/ spring loaded hold down



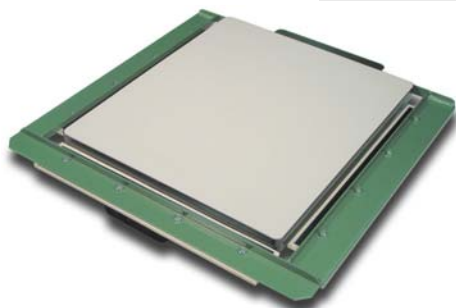
### Jacket Hold Downs

The Quick-Stretch is for printing lined garments like jackets, or delicate fabrics where spray adhesive can't be used. Fits around existing pallet.

Available for Many Pallet Sizes, PLUS Sleeve & Custom Sizes

Works with:

- 6" x 6" (15 x 15 cm)
- 4" x 17" (10 x 43 cm)
- 9" x 8" (23 x 20 cm)
- 10.5" x 17" (27 x 43 cm)
- 15" x 17" (38 x 43 cm)
- 17" x 21" (43 x 53 cm)



### V-1000 Technical Specifications

Maximum Screen Size	21" wide x 28" long (53 x 71 cm)	
Maximum Pallet Size	17" wide x 21" long (43 x 53 cm)	
Overall Size 1 table 4 color (1x4), tabletop unit [w/ 20" x 24" (51 x 61cm) screen]	34" x 62" x 29" tall (86 x 157 x 74 cm)	
Overall Size 4 table 4 color (4x4), rotary floor unit [w/ 20" x 24" (51 x 61cm) screen]	81" diameter x 58" tall (206 x 147 cm)	
Overall Size 4 table 6 color (4x6) rotary floor unit [w/ 20" x 24" (51 x 61cm) screen]	92" diameter x 58" tall (234 x 147 cm)	
Shipping	Box Size	Weight
Print Head	13" x 13" x 7" (33 x 33 x 18 cm)	11 lbs (5 kg)
Rotor Arm	37" x 11" x 7" (94 x 28 x 18 cm)	14 lbs (6.4 kg)
Two Rotor Arms (packed together)	37" x 11" x 14" (94 x 28 x 36 cm)	28 lbs (12.7 kg)
Standard Size Pallet with Pallet Arm	24" x 19" x 7" (61 x 48 x 18 cm)	20 lbs (9 kg)
Two Standard Size Pallets with Pallet Arms	24" x 19" x 14" (61 x 48 x 36 cm)	40 lbs (18 kg)
Legs, floor model	37" x 9" x 9" (94 x 23 x 23 cm)	40 lbs (18 kg)
Center Hub Assembly 4 table 6 color (4x6)	24" x 24" x 16" (61 x 61 x 41 cm)	87 lbs (39.5 kg)
Center Hub Assembly 4 table 4 color (4x4)	16" x 16" x 16" (41 x 41 x 41 cm)	61 lbs (27.7 kg)
Tabletop Press (must add print heads & pallet)	49" x 13" x 13" (124 x 33 x 33 cm)	38 lbs (17.2 kg)

All shipping weights and dimensions are for continental US shipping only. Call for other shipping specifications. Ex-works from Allentown PA. Although all V-1000 press sub assemblies are packed into individual boxes, which can be shipped via small package carrier like, UPS, Fed-X, DHL, it may be more economical to use a "freight company (common carrier) depending on your area.

\*If shipping by a common carrier there will be a \$25.00 skid charge and you must add 40 lbs. for the skid.

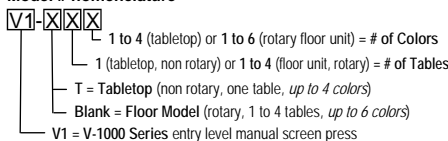
Example: A V-1-44 is a V-1000 4 table 4 color floor unit press. It will ship in the following boxes:

- (1) Center hub assembly 4x4, (1) Legs, floor model, (2) Two rotor arms, (2) Two pallets with pallet arms, and (4) Print heads.

### How to order V-1000 press:

- 1- Choose tabletop or floor unit. (Tabletop is 4 color maximum.) (Floor model is 4 color or 6 color maximum.)
- 2- Choose number of tables/stations, 1 on tabletop 1-4 on floor unit
- 3- Choose number of colors, 1-4 on tabletop 1-6 on floor unit

### Model # nomenclature



Toll Free: 1.800.482.7839  
 1.800.4VASTEX

V-1000\_1207